

**HUSQVARNA OUTDOOR PRODUCTS ITALIA**

<b>PNC</b>	<b>Type/ Prefix/ nd</b>	<b>Model</b>	<b>Brand</b>
953900740	01	CABRIO PLUS 257B	McCulloch
953900770	01	B 267B	Partner
953900771	01	B 297B	Partner

**Number of Pages 1 of 5**

<b>Factory: IIQ - Valmadrera</b>	<b>Product Group: OP 93</b>
<b>Publication Number: MIPL2007_V050000001</b>	<b>Petrol Portable</b>
<b>Publication Date: 29/01/07</b>	<b>Sub Group 9433</b>

FIGURE 1

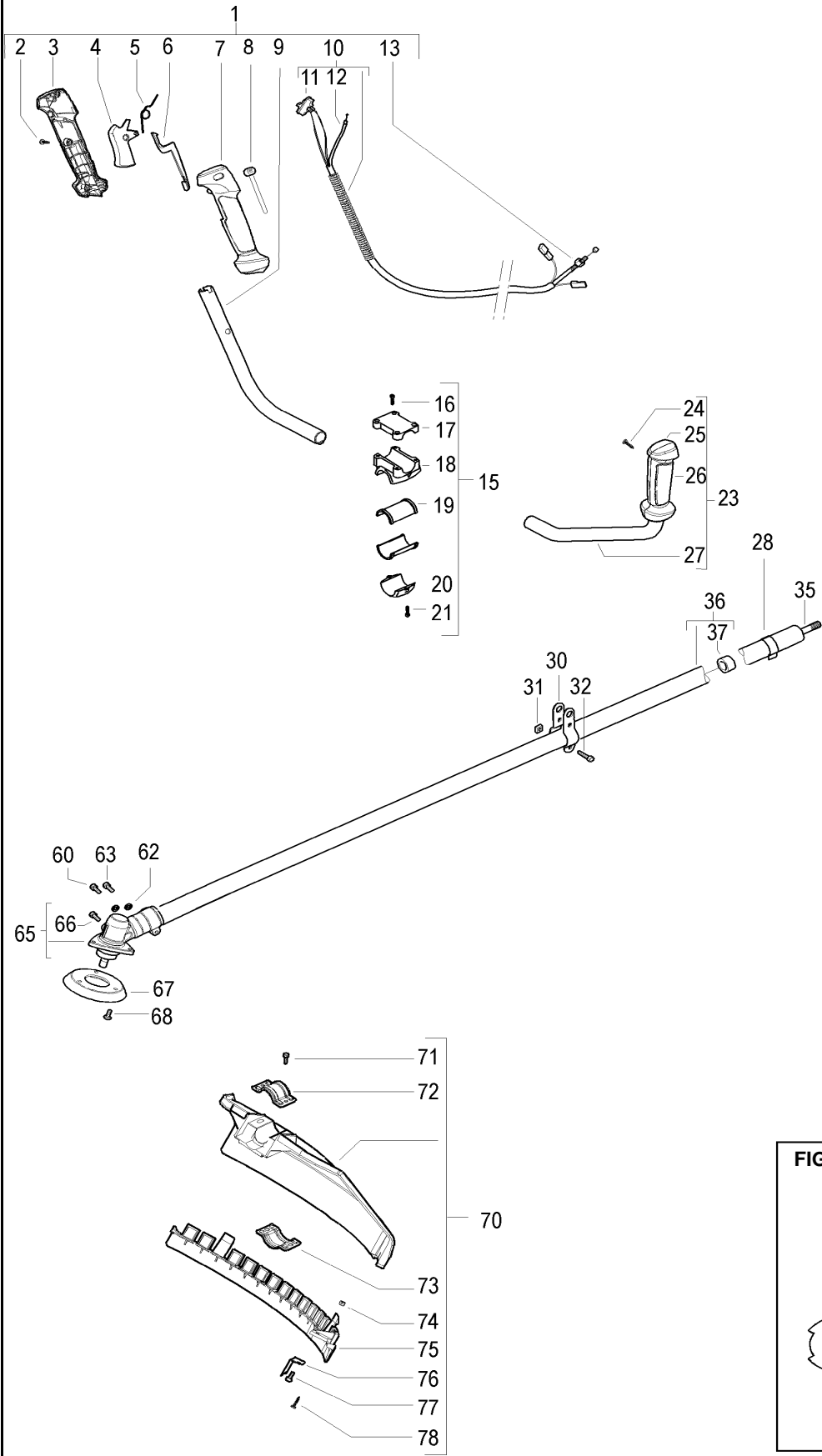


FIGURE 2

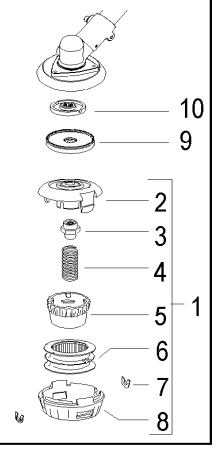
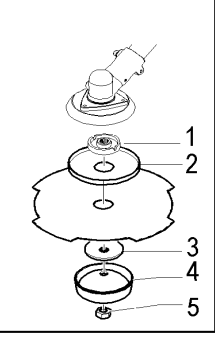


FIGURE 3



Item	P/N McC	P/N ELX	Qty	DESCRIPTION
<b>FIGURE 1</b>				
1	243563	538243563	1	right handle assy
2	• 240862	538240862	3	screw 4x18
3	• 242533	538242533	1	right handle (right half)
4	• 242537	538242537	1	throttle trigger
5	• 242540	538242540	1	trigger spring
6	• 242538	538242538	1	safety lever
7	• 242534	538242534	1	right handle (left half)
8	• 242539	538242539	1	throttle advance
9	• 242605	538242605	1	right handle bar
C 10	• 243566	538243566	1	wires assy
11	•• 242439	538242439	1	switch
C 12	•• 243569	538243569	1	throttle cable
13	• 235912	538235912	1	nut M6
15	243428	538243428	1	handle clamp assy
16	• 235803	538235803	4	screw M5x25
17	• 242200	538242200	1	upper clamp
18	• 243082	538243082	1	handle clamp
19	• 241684	538241684	2	d.25 adapter
20	• 242900	538242900	1	lower clamp
21	• 229077	538229077	2	screw M5x18
23	243565	538243565	1	left handle assy
24	• 240862	538240862	2	screw 4x18
25	• 242536	538242536	1	left handle (right half)
26	• 242535	538242535	1	left handle (left half)
27	• 242606	538242606	1	left handle bar
28	229850	538229850	1	cable retainer
30	228152	538228152	2	harness half hook
31	236642	538236642	2	nut M6
32	235911	538235911	2	screw M6x12
35	240486	538240486	1	drive shaft
36	242442	538242442	1	outer shaft
37	• 228192	538228192	5	bushing ass'y
60	235802	538235802	1	screw m5x14
62	236529	538236529	2	split washer
63	235803	538235803	1	screw m5x25
65	242728	538242728	1	gear box ass'y
66	• 240151	538240151	1	screw M8x10
67	242729	538242729	1	flange guard
68	240688	538240688	3	screw+washer

Item	P/N McC	P/N ELX	Qty	DESCRIPTION
A 70	249155	538249155	1	d.25 safety guard ass'y
71	• 227563	538227563	2	M5x16 screw
72	• 242629	538242629	1	upper clamp
73	• 242752	538242752	1	lower clamp
74	• 229208	538229208	2	nut M5
75	• 242644	538242644	1	string head guard
76	• 241973	538241973	1	line cutter
77	• 227563	538227563	2	M5x16 screw
78	• 240862	538240862	1	screw 4x18

<b>FIGURE 2</b>				
A 1	531025001	531025001	1	P 25 trimmer head
2	• 537419302	537421501	1	body
3	• 537338901	537427901	1	adapter T25
C 4	• 537338901	537338901	1	spring T25
C 5	• 537419601	537419601	1	knob
C 6	• 537419501	537419501	1	spool (without line)
C 7	• 537419701	537419701	2	bushing
8	• 537419401	537419401	1	cover
9	242823	538242823	1	spacer
10	242815	538242815	1	flange

<b>FIGURE 3</b>				
A 1	242815	538242815	1	flange
A 2	241155	538241155	1	grass shield
A 3	241006	538241006	1	flange
A 4	236596	538236596	1	cup
A 5	240481	538240481	1	nut

A=ALTA ROTAZIONE  
 B=MEDIA ROTAZIONE  
 C=ALTA ROTAZIONE  
 NUOVI CODICI

A=HIGH MOVING  
 B=MEDIUM MOVING  
 C=SLOW MOVING  
 NEW P. NUMBERS

A=HAUTE DEMANDE  
 B=MOYENNE DEMANDE  
 C=BASSE DEMANDE  
 NOUVELLES REFERENCES

A=GROBE NACHFRAGE  
 B=MITTELMAESSIGE  
 C=WENIGE NACHFRAGE  
 NEU CODEX

FIGURE 4

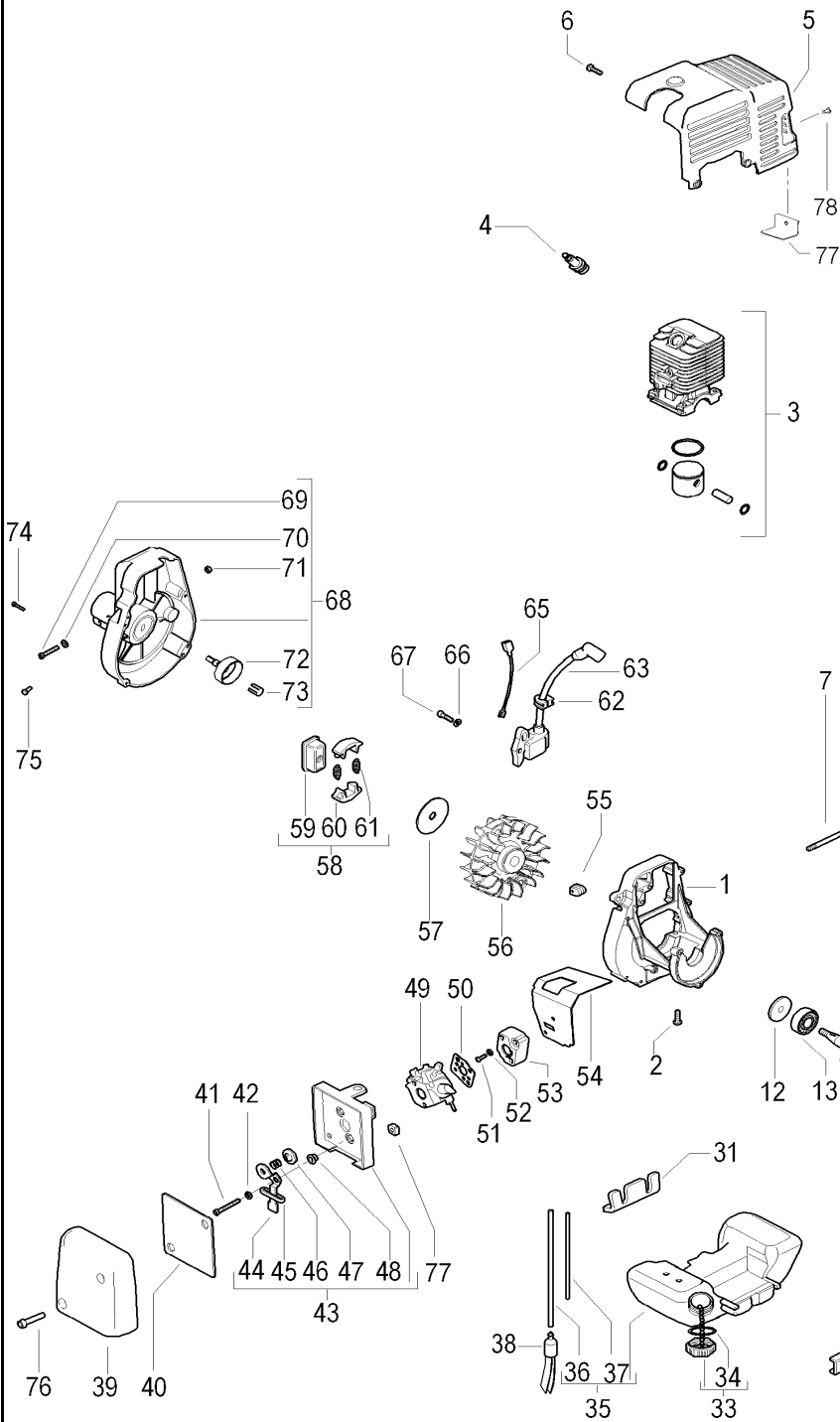


FIGURE 5

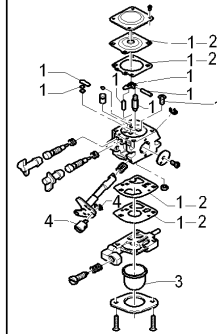


FIGURE 6

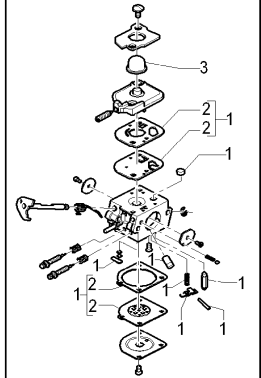
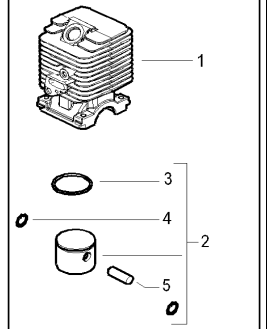


FIGURE 7



Item	P/N McC	P/N ELX	Qty	DESCRIPTION
<b>FIGURE 4</b>				
1	242802	538242802	1	crankcase
2	227565	538227565	4	screw M5x25
3	<b>FIGURE 7,8</b>			
A 4	92879	538092879	1	spark plug RDJ8J
5	243488	538243488	1	engine cover
6	241963	538241963	2	screw M4x22
7	242037	538242037	2	stud bolt
B 8	243273	538243273	1	exhaust gasket
C 9	242131	538242131	1	muffler
10	323760	538323760	1	muffler shield
11	235642	538235642	2	nut M5
C 12	242994	538242994	2	seal
C 13	241594	538241594	2	ball bearing
15	243486	538243486	1	crankshaft assy
C 16 •	235742	538235742	1	needle bearing
17	241784	538241784	1	starter pawl assy
18 •	111088	538111088	1	snap ring
19 •	241782	538241782	1	spring
20 •	241781	538241781	1	pawl
21	235248	538235248	1	nut
C 22	242041	538242041	1	starter assy
23 •	240862	538240862	1	screw M4x18
24 •	241703	538241703	1	washer
A 25 •	241746	538241746	1	rope
26 •	235612	538235612	1	washer
27 •	241778	538241778	1	handle
B 28 •	241620	538241620	1	pulley
B 29 •	241619	538241619	1	spring
30	241963	538241963	3	screw M4x20
31	242038	538242038	1	tank grommet (crankcase side)
32	242039	538242039	1	tank grommet (starter side)
B 33	242484	538242484	1	fuel tank cap assy
A 34 •	236564	538236564	1	gasket
C 35	242040	538242040	1	fuel tank assy
B 36 •	229717	538229717	1	hose
B 37 •	229743	538229743	1	primer bulb hose
A 38	240452	538240452	1	fuel pickup
39	243489	538243489	1	air filter cover
B 40	227023	538227023	1	air filter
41	235808	538235808	2	screw 5x50
42	235248	538235248	1	washer
43	248485	538248485	1	air box assy
44 •	241769	538241769	1	choke lever
45 •	241622	538241622	1	choke lever grommet
46 •	235822	538235822	1	spring
47 •	241602	538241602	1	choke shutter
48 •	227022	538227022	2	bushing
C 49	<b>FIGURE 5,6</b>			
A 50	241600	538241600	1	carb. Gasket
51	235806	538235806	2	screw M5x20
52	235248	538235248	2	washer
B 53	241750	538241750	1	carb. Spacer
B 54	242860	538242860	1	intake gasket
55	241607	538241607	1	grommet

Item	P/N McC	P/N ELX	Qty	DESCRIPTION
56	243311	538243311	1	flywheel
57	241604	538241604	1	dust shield
B 58	241793	538241793	1	clutch assy
59 •	241789	538241789	1	clutch hub
60 •	241743	538241743	2	clutch shoe
A 61 •	241794	538241794	2	clutch spring
62	236322	538236322	1	grommet
C 63	243429	538243429	1	ignition coil
65	241606	538241606	1	ground wire
66	235248	538235248	2	washer
67	235806	538235806	2	screw M5x20
C 68	241725	538241725	1	joint assy
69 •	235803	538235803	1	screw M5x25
70 •	235248	538235248	1	washer
71 •	229524	538229524	1	nut M5
72 •	241785	538241785	1	clutch drum
73 •	228260	538228260	1	pin
74	227568	538227568	4	screw M4x20
75	236981	538236981	1	screw 3,5x9,5
76	235803	538235803	2	screw M5x25
77	229524	538229524	2	nut M5
78	243519	538243519	1	bracket
79	241974	538241974	1	rivet 3.2x6

<b>FIGURE 5 WALBRO WT 686</b>				
C -	242932	538242932		carb.
B 1 •	324013	538324013		K20 rep. Kit
A 2 ••	324009	538324009		D20 gasket kit
C 3 •	225834	538225834		primer bulb
4 •	224466	538224466		swivel kit

<b>FIGURE 6 ZAMA C1Q M38</b>				
C -	-	-		carb.
B 1 •	300465	538300465		RB-28 rep.kit
A 2 ••	300473	538300473		diaph/gasket kit
C 3 •	246946	538246946		primer bulb

<b>FIGURE 7 cylinder, piston</b>				
C 1	242803	538242803	1	cylinder 25 cc
C 2	248177	538248177	1	piston kit 25 cc
B 3 •	240002	538240002	1	piston ring
4 •	235008	538235008	2	snap ring
5 •	241735	538241735	1	piston pin
C 1	243076	538243076	1	cylinder 29 cc
C 2	249179	538249179	1	piston kit 29 cc
B 3 •	242602	538242602	1	piston ring
4 •	235008	538235008	2	snap ring
5 •	241735	538241735	1	piston pin

A=ALTA ROTAZIONE  
 B=MEDIA ROTAZIONE  
 C=ALTA ROTAZIONE  
 NUOVI CODICI

A=HIGH MOVING  
 B=MEDIUM MOVING  
 C=SLOW MOVING  
 NEW P. NUMBERS

A=HAUTE DEMANDE  
 B=MOYENNE DEMANDE  
 C=BASSE DEMANDE  
 NOUVELLES REFERENCES

A=GROBE NACHFRAGE  
 B=MITTELMAESSIGE  
 C=WENIGE NACHFRAGE  
 NEU CODEX